

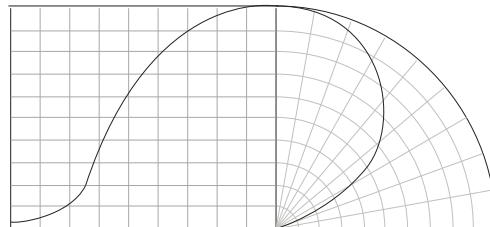
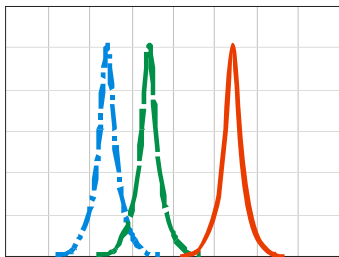
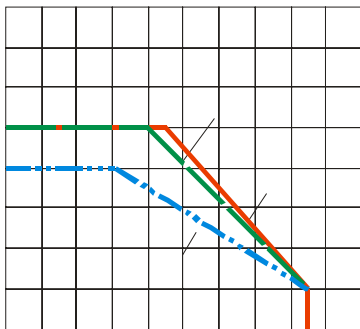
# **LG-T1921RGBA-TD-AL**

\_\_\_\_\_  
\_\_\_\_\_  
\_\_\_\_\_





## Typical Characteristics Curves



### Reliability Test Items And Conditions

实验项目	参考标准	实验条件	时间	样品数	判据
		↔			

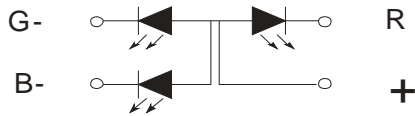
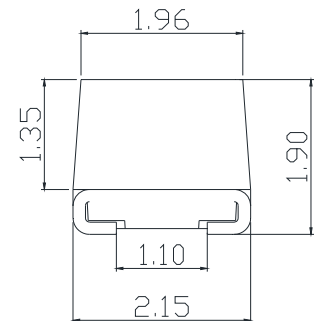
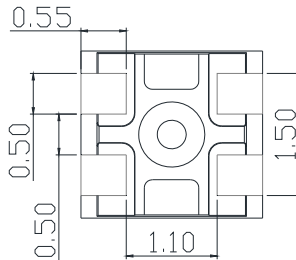
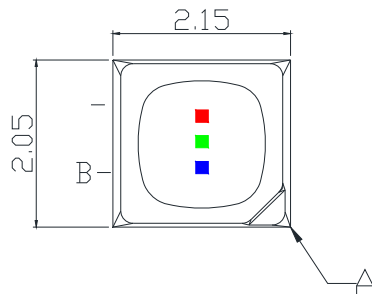
### Criteria For Judging Damage

测试项目	符号	测试条件	判定标准
			μ
			≧ ≦

## Product design and operational recommendation

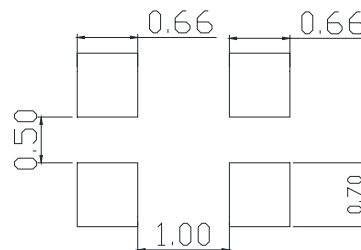
1 mm

Product design Unit: mm



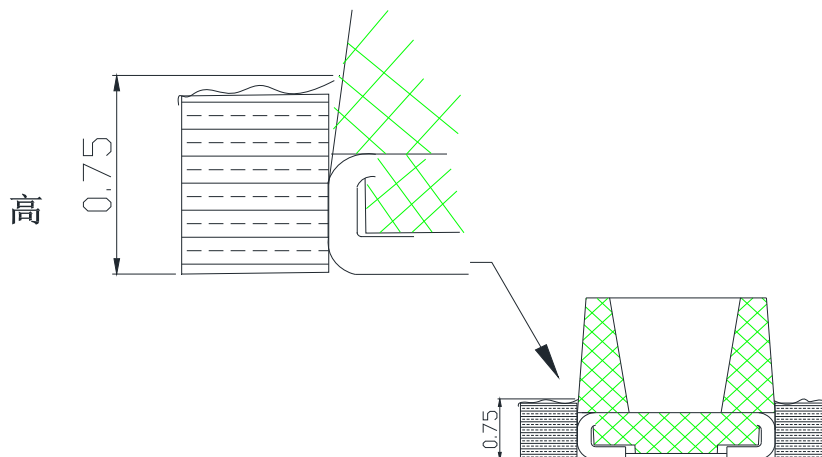
2 mm

Recommended soldering pad (Unit: mm)



3 0.75mm

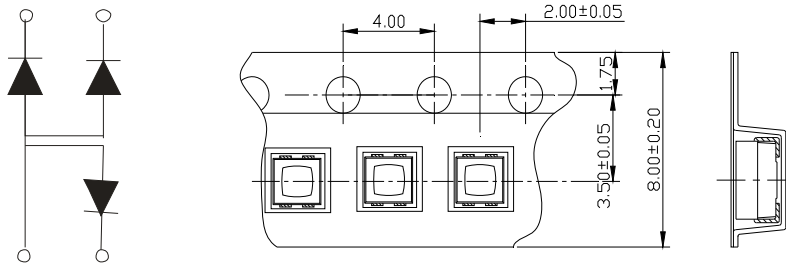
Recommendation for glue filling: filling height must be higher than or equal to 0.75mm



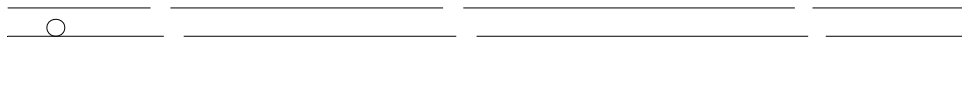
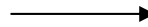
## 1

### Packaging (1)

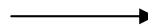
#### ◇ Carrier Tape



#### ◇ Details Of Carrier Tape



#### ◇ Reel Dimension



LIGHT

**LIGHT ELECTRONICS CO., LTD.**

---





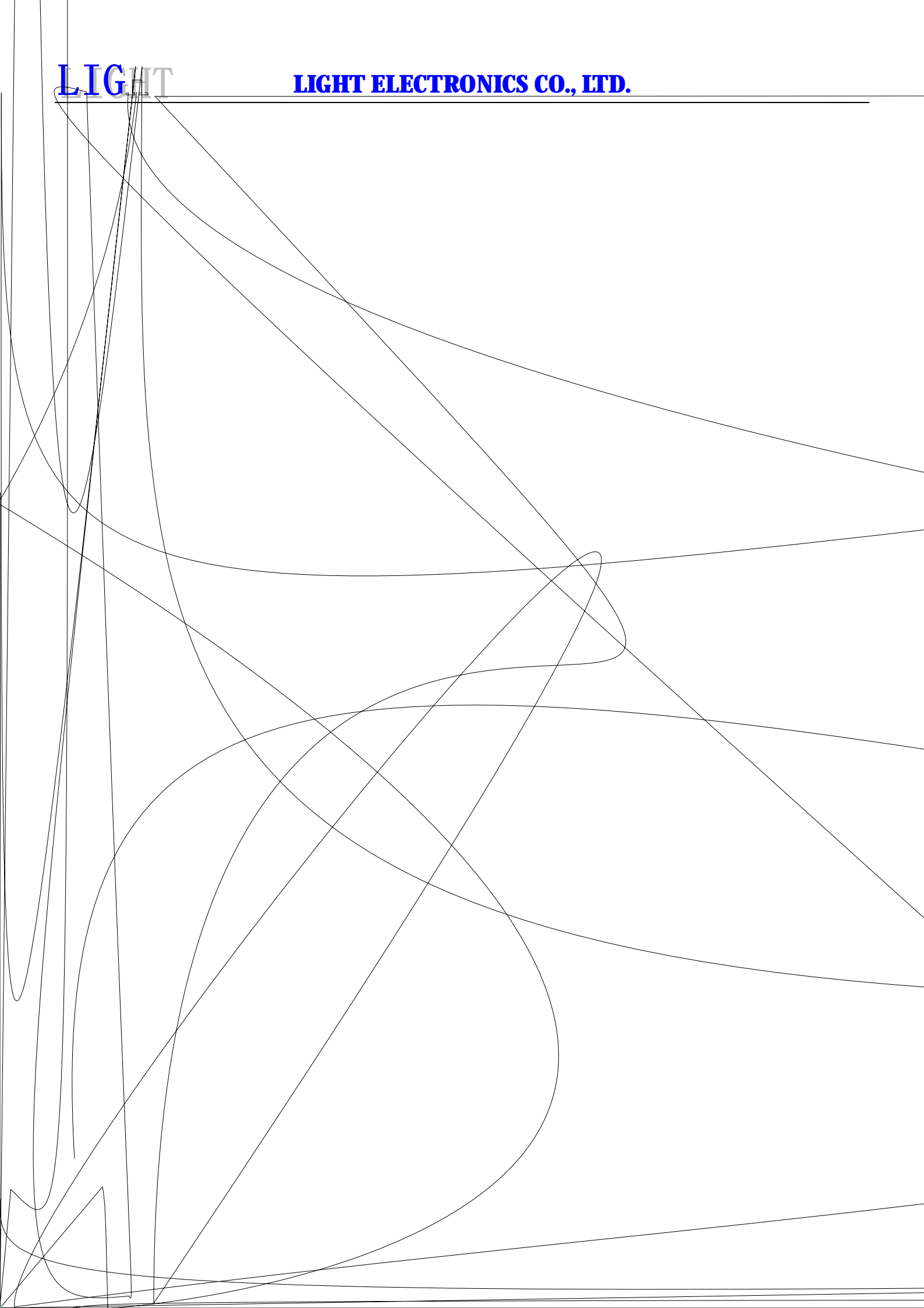
## 2

### Guideline for Soldering (2)

LIGHT

LIGHT ELECTRONICS CO., LTD.

---



## (2)

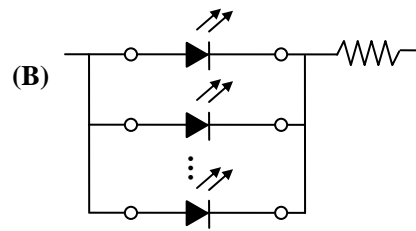
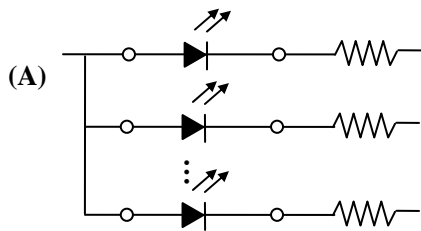
### Precautions (2)

3.

#### Design Consideration

- 

- 



- 

4.

#### Reverse voltage protection

-

