

# **LT-GDM-02-G3**

## Ground-Detecting Module

### Product Specifications

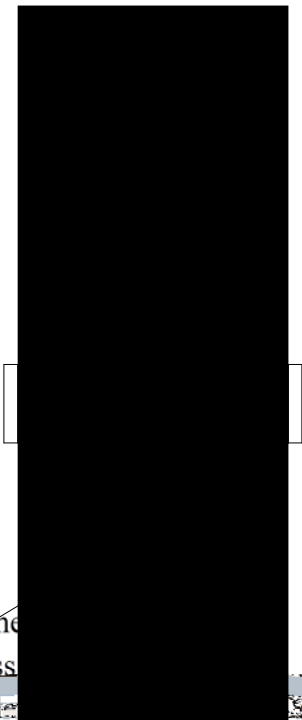
SPEC. NO. : SZ22101202  
DATE : 2022/11/7  
REV. : A/1

Approved By:

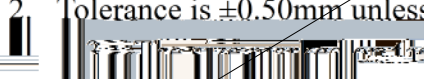
Checked By:

Prepared By:

## DIMENSIONS OF PRODUCT



### Notes:

1. All dimensions are in millimeter
2. Tolerance is  $\pm 0.50\text{mm}$  unless
3. 
4. Specifications are subject to change without notice.

### Features

Pb free product—RoHS compliant

Fast response time

High sensitivity

Invisible wavelength  $\lambda=940\text{nm}$

Integration structure

The four pins of the connector and the corresponding PCB pads are filled with silicone

### Typical Applications

Intelligent Sweeping Robot

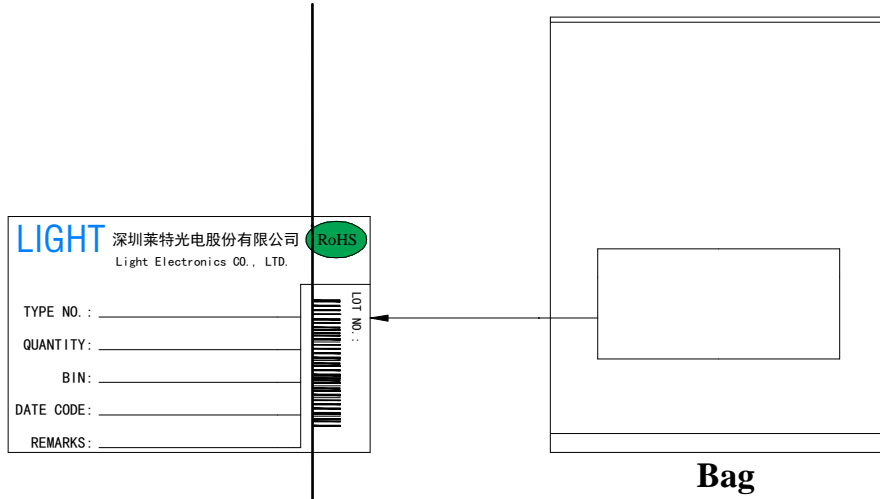
### Absolute Maximum Ratings at $T_a=25$

Parameter		Symbol	Ratings	Unit
Input	Power Dissipation	$P_d$	170	mW
	Reverse Voltage	$V_R$	5	V
	Forward Current	$I_F$	100	mA
	Peak Forward Current <sup>*1</sup>	$I_{FP}$	250	mA
Output	Collector Power Dissipation	$P_c$	75	mW
	Collector Current	$I_C$	20	mA
	Collector-Emitter Voltage	$V_{CEO}$	30	V
	Emitter-Collector Voltage	$V_{ECO}$	5	V
Electrostatic Discharge (HBM)		ESD	4000	V
Operating Temperature Range		$T_{opr}$	-25 to + 65	
Storage Temperature Range		$T_{stg}$	-40 to + 85	

Note: 1. Pulse width 0.1msec, duty cycle 1/2



## PACKAGE



Bag volume (pcs / Bag)	Outer Carton volume (Bag / Carton)
30	18